

RX-5 - 11" Hybrid EXT HD - HBX

CAM	LETOFF	BRACE HEIGHT	AXLE TO AXLE	DRAW LENGTH	MODULE POSITION	BASE CAM	STRING	CONTROL CABLE	BUSS CABLE
HBX	80%-85%	6 1/4	30"	25	K	One Size	57.85	33.85	33.85
	80%-85%	6 1/4	30"	25 1/2	J	One Size	57.85	33.85	33.85
	80%-85%	6 1/4	30"	26	I	One Size	57.85	33.85	33.85
	80%-85%	6 1/4	30"	26 1/2	H	One Size	57.85	33.85	33.85
	80%-85%	6 1/4	30"	27	G	One Size	57.85	33.85	33.85
	80%-85%	6 1/4	30"	27 1/2	F	One Size	57.85	33.85	33.85
	80%-85%	6 1/4	30"	28	*E	One Size	57.85	33.85	33.85
	80%-85%	6 1/4	30"	28 1/2	D	One Size	57.85	33.85	33.85
	80%-85%	6 1/4	30"	29	*C	One Size	57.85	33.85	33.85
	80%-85%	6 1/4	30"	29 1/2	B	One Size	57.85	33.85	33.85
	80%-85%	6 1/4	30"	30	A	One Size	57.85	33.85	33.85

Model: RX-5

Limb: Hybrid 11" EXT HD

Stealth Shot Bar: 3.50"

Pocket: B1

String Model: VN4

Date: 2/23/22

Model Year: 2021

Roller Mount #21

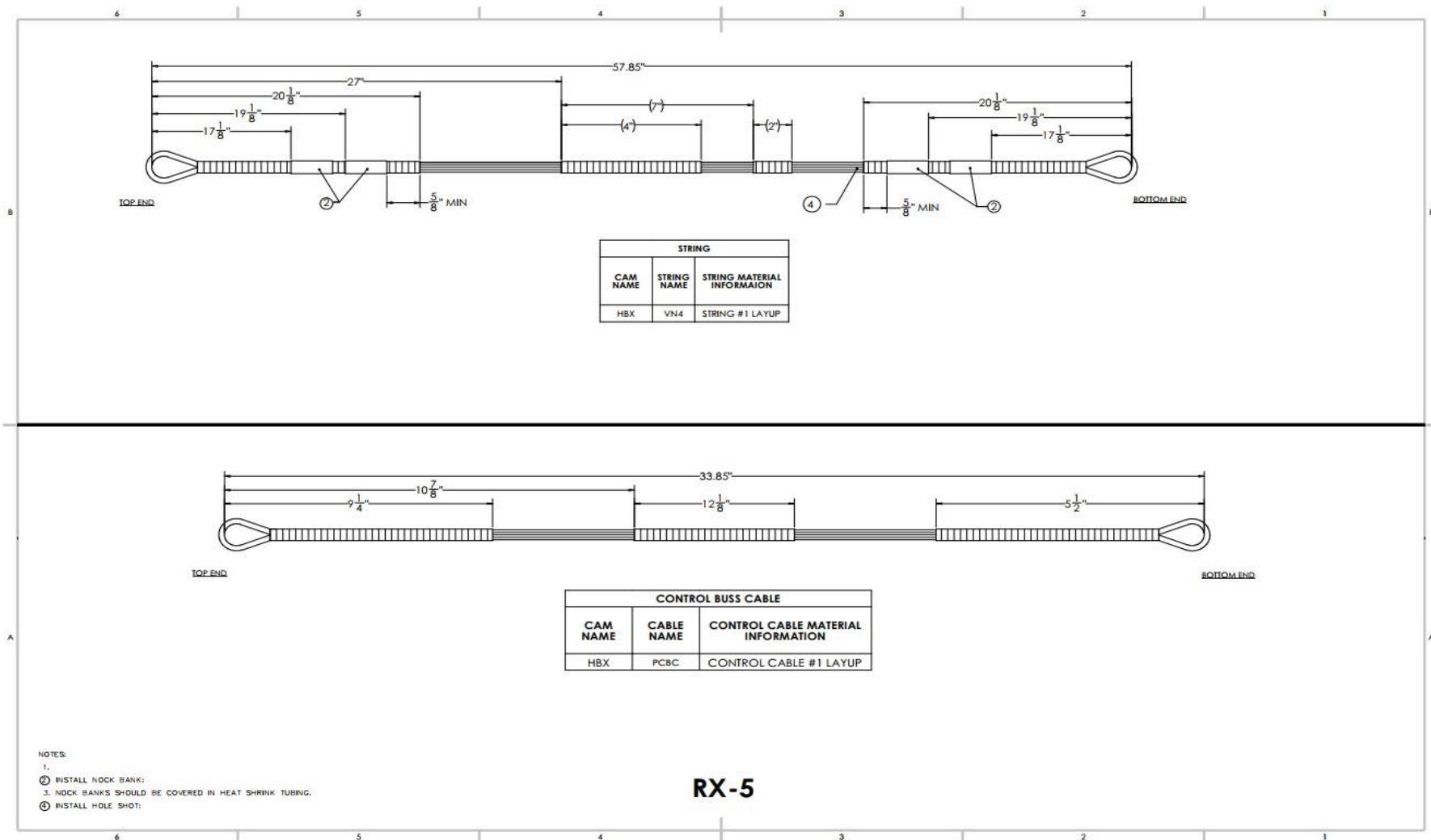
Rocker: #18 & #19

Pocket Dowel: B1

*=Shipped Module Position

Limb Shox #8

Limb Bolt Length: 1.75



After Market String Warning

Warning: Never use aftermarket strings or cables on your bow. Aftermarket strings and cables may not be suitable for replacement on your Hoyt bow. Hoyt cannot guarantee that the materials or the manufacturing methods used by aftermarket string and cable manufacturers will be suitable for use on your Hoyt bow. Failure to heed this warning could result in serious injury or death to yourself or bystanders. Only Genuine Hoyt or Fuse branded strings and cables should be used on your Hoyt

Warning: Never move, remove, or add additional string weights to your Hoyt bow's string or cables. String weights are specifically engineered for weight and location to ensure correct operation of your bow. Alterations to string and cable speed weights could cause your bow to break or malfunction and cause serious injury or death.