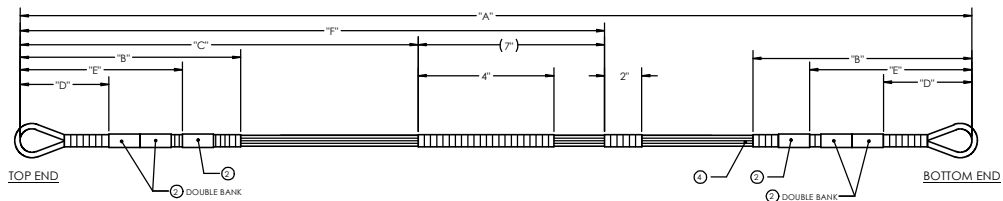


RX-4 - Hybrid 11" EXT - ZTR

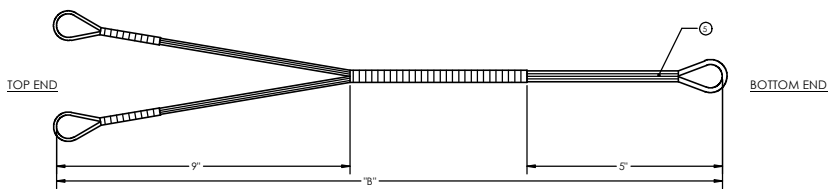
CAM	LETOFF	BRACE HEIGHT	AXLE TO AXLE	DRAW LENGTH	MODULE POSITION	BASE CAM	STRING	CONTROL CABLE	BUSS CABLE	CAM FAMILY
ZTR #2	80%	6 1/8	29 3/4	25	A	2	53.25	32.70	31.10	ZTR
	80%	6 1/8	29 3/4	25.5	B	2	53.25	32.70	31.10	ZTR
	80%	6 1/8	29 3/4	26	C	2	53.25	32.70	31.10	ZTR
	80%	6 1/8	29 3/4	26.5	D	2	53.25	32.70	31.10	ZTR
	80%	6 1/8	29 3/4	27	*E	2	53.25	32.70	31.10	ZTR
	80%	6 1/8	29 3/4	27.5	F	2	53.25	32.70	31.10	ZTR
	80%	6 1/8	29 3/4	28	G	2	53.25	32.70	31.10	ZTR

CAM	LETOFF	BRACE HEIGHT	AXLE TO AXLE	DRAW LENGTH	MODULE POSITION	BASE CAM	STRING	CONTROL CABLE	BUSS CABLE	CAM FAMILY
ZTR #3	80%	6 1/8	29 3/4	28	A	3	56.40	32.75	31.10	ZTR
	80%	6 1/8	29 3/4	28.5	B	3	56.40	32.75	31.10	ZTR
	80%	6 1/8	29 3/4	29	C	3	56.40	32.75	31.10	ZTR
	80%	6 1/8	29 3/4	29.5	D	3	56.40	32.75	31.10	ZTR
	80%	6 1/8	29 3/4	30	*E	3	56.40	32.75	31.10	ZTR

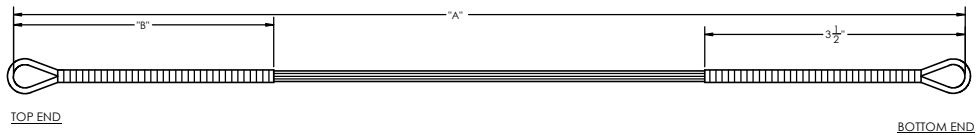
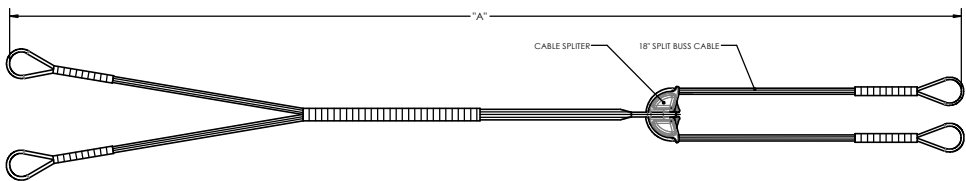
*=Shipped Module Position



STRING								
CAM SIZE	STRING NAME	"A" OVERALL LENGTH	"B" SERVING LENGTH	"C" START CENTER SERVING	"D" TOP & BOT BANK #1	"E" TOP & BOT BANK #2	"F" START STEALTH SHOT	STRING MATERIAL INFORMATION
ZTR #2	AX6	53.25"	17 3/4"	24 3/4"	14.75"	16.75"	31 3/4"	STRING # 1
ZTR #3	AX6	56.40"	19 3/4"	26 3/8"	16.75"	18.75"	33 3/8"	



HARD ROLLER YOKE BUSS CABLE			
CAM SIZE	"A" OVERALL LENGTH	"B" MAIN CABLE LENGTH	BUSS CABLE MATERIAL INFORMATION
ZTR #2	31.10"	22.65"	BUSS CABLE #1
ZTR #3	31.10"	22.65"	



ROLLER CONTROL BUSS CABLE			
CAM SIZE	"A" OVERALL LENGTH	"B" TOP SERVING LENGTH	CONTROL CABLE MATERIAL INFORMATION
ZTR #2	32.70"	20"	CONTROL CABLE #1
ZTR #3	32.75"	20"	

NOTES:

1. LOCATION OF NOCK BANK
3. NOCK BANKS SHOULD BE COVERED IN HEAT SHRINK TUBING.
- LOCATION OF HOLE SHOT.
- LOCATION OF CABLE LEECH

RX-4

After Market String Warning

Warning: Never use aftermarket strings or cables on your bow. Aftermarket strings and cables may not be suitable for replacement on your Hoyt bow. Hoyt cannot guarantee that the materials or the manufacturing methods used by aftermarket string and cable manufacturers will be suitable for use on your Hoyt bow. Failure to heed this warning could result in serious injury or death to yourself or bystanders. Only Genuine Hoyt or Fuse branded strings and cables should be used on your Hoyt bow.

Warning: Never move, remove, or add additional string weights to your Hoyt bow's string or cables. String weights are specifically engineered for weight and location to ensure correct operation of your bow. Alterations to string and cable speed weights could cause your bow to break or malfunction and cause serious injury or death.