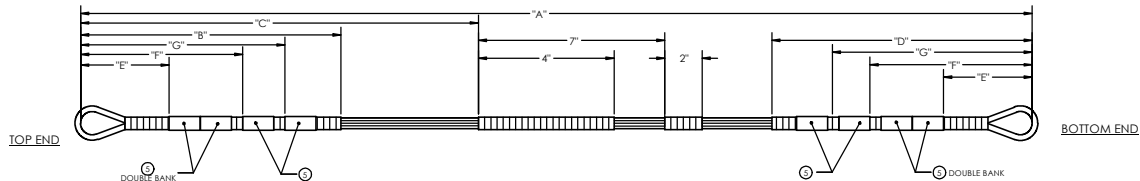


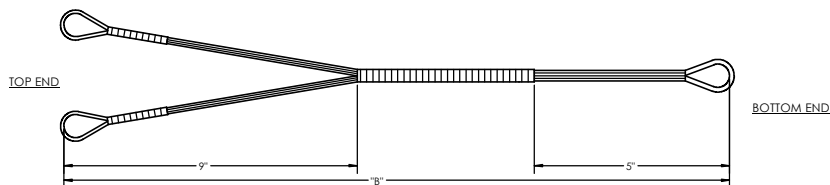
## Double XL - Hybrid 13" EXT - Hyper ZT

CAM	LETOFF	BRACE HEIGHT	AXLE TO AXLE	DRAW LENGTH	MODULE POSITION	BASE CAM	STRING	CONTROL CABLE	BUSS CABLE	CAM FAMILY
Hyper ZT #4	80%	7 3/4	35 7/8	32	A	4	62.50	39.25	37.63	ZT
	80%	7 3/4	35 7/8	32.5	B	4	62.50	39.25	37.63	ZT
	80%	7 3/4	35 7/8	33	*C	4	62.50	39.25	37.63	ZT
	80%	7 3/4	35 7/8	33.5	D	4	62.50	39.25	37.63	ZT
	80%	7 3/4	35 7/8	34	E	4	62.50	39.25	37.63	ZT

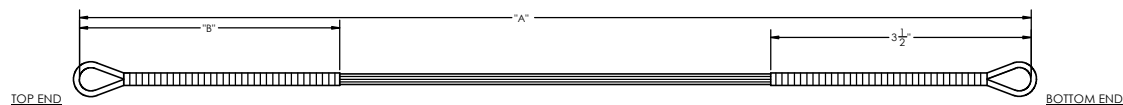
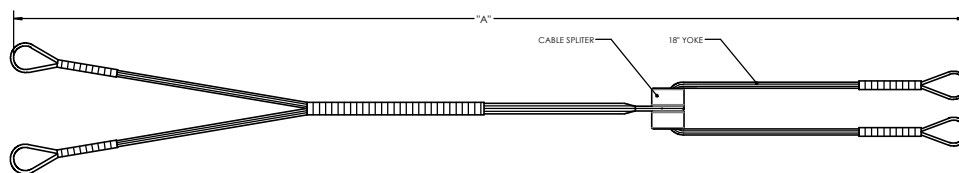
\*=Shipped Module Position



STRING								
CAM SIZE	STRING NAME	"A" OVERALL LENGTH	"B" TOP SERVING LENGTH	"C" START CENTER SERVING	"D" BOT SERVING LENGTH	"E" TOP & BOT BANK #1	"F" TOP & BOT BANK #2	"G" TOP & BOT BANK #3
ZT #4	ZB	62.50"	20.75"	29.37"	20.75"	16.88"	18.38"	19.25"
		STRING MATERIAL INFORMATION						
		STRING #1						



HARD ROLLER YOKE BUSS CABLE			
CAM SIZE	"A" OVERALL LENGTH	"B" MAIN CABLE LENGTH	BUSS CABLE MATERIAL INFORMATION
ZT #4	37.63"	28.63"	BUSS CABLE #1



ROLLER CONTROL BUSS CABLE		
CAM SIZE	"A" OVERALL LENGTH	"B" TOP SERVING LENGTH
ZT #4	39.25"	21.25"
CONTROL CABLE MATERIAL INFORMATION		
CONTROL CABLE #1		

NOTES:

1. INSTALL NOCK BANK.
2. NOCK BANKS SHOULD BE COVERED IN HEAT SHRINK TUBING.

DOUBLE XL

### **After Market String Warning**

**Warning:** Never use aftermarket strings or cables on your bow. Aftermarket strings and cables may not be suitable for replacement on your Hoyt bow. Hoyt cannot guarantee that the materials or the manufacturing methods used by aftermarket string and cable manufacturers will be suitable for use on your Hoyt bow. Failure to heed this warning could result in serious injury or death to yourself or bystanders. Only Genuine Hoyt or Fuse branded strings and cables should be used on your Hoyt bow.

**Warning:** Never move, remove, or add additional string weights to your Hoyt bow's string or cables. String weights are specifically engineered for weight and location to ensure correct operation of your bow. Alterations to string and cable speed weights could cause your bow to break or malfunction and cause serious injury or death.