

NitruX - 12" Quad Flex - NitruX Cam

CAM	LETOFF	BRACE HEIGHT	AXLE TO AXLE	DRAW LENGTH	MODULE POSITION	BASE CAM	STRING	CONTROL CABLE	BUSS CABLE	CAM FAMILY
NX #2	80%	6 1/2	31 1/2	24	A	2	51.88	34.63	33.13	NX
	80%	6 1/2	31 1/2	24 1/2	B	2	51.88	34.63	33.13	NX
	80%	6 1/2	31 1/2	25	C	2	51.88	34.63	33.13	NX
	80%	6 1/2	31 1/2	25 1/2	D	2	51.88	34.63	33.13	NX
	80%	6 1/2	31 1/2	26	E	2	51.88	34.63	33.13	NX
	80%	6 1/2	31 1/2	26 1/2	F	2	51.88	34.63	33.13	NX
	80%	6 1/2	31 1/2	27	G	2	51.88	34.63	33.13	NX

NitruX - 12" Quad Flex - NitruX Cam

CAM	LETOFF	BRACE HEIGHT	AXLE TO AXLE	DRAW LENGTH	MODULE POSITION	BASE CAM	STRING	CONTROL CABLE	BUSS CABLE	CAM FAMILY
NX #3	80%	6 1/2	31 1/2	27	A	3	54.88	34.63	33.13	NX
	80%	6 1/2	31 1/2	27 1/2	B	3	54.88	34.63	33.13	NX
	80%	6 1/2	31 1/2	28	C	3	54.88	34.63	33.13	NX
	80%	6 1/2	31 1/2	28 1/2	D	3	54.88	34.63	33.13	NX
	80%	6 1/2	31 1/2	29	E	3	54.88	34.63	33.13	NX
	80%	6 1/2	31 1/2	29 1/2	F	3	54.88	34.63	33.13	NX
	80%	6 1/2	31 1/2	30	G	3	54.88	34.63	33.13	NX

Model: NitruX

Limb: 12" Quad Flex

Stealth shot bar: 5.00

Roller Mount #17

Pocket: W14

Model Year: 2019

Limb shox: #3.1

Limb Bolt Length: 2.50

String model: NX8

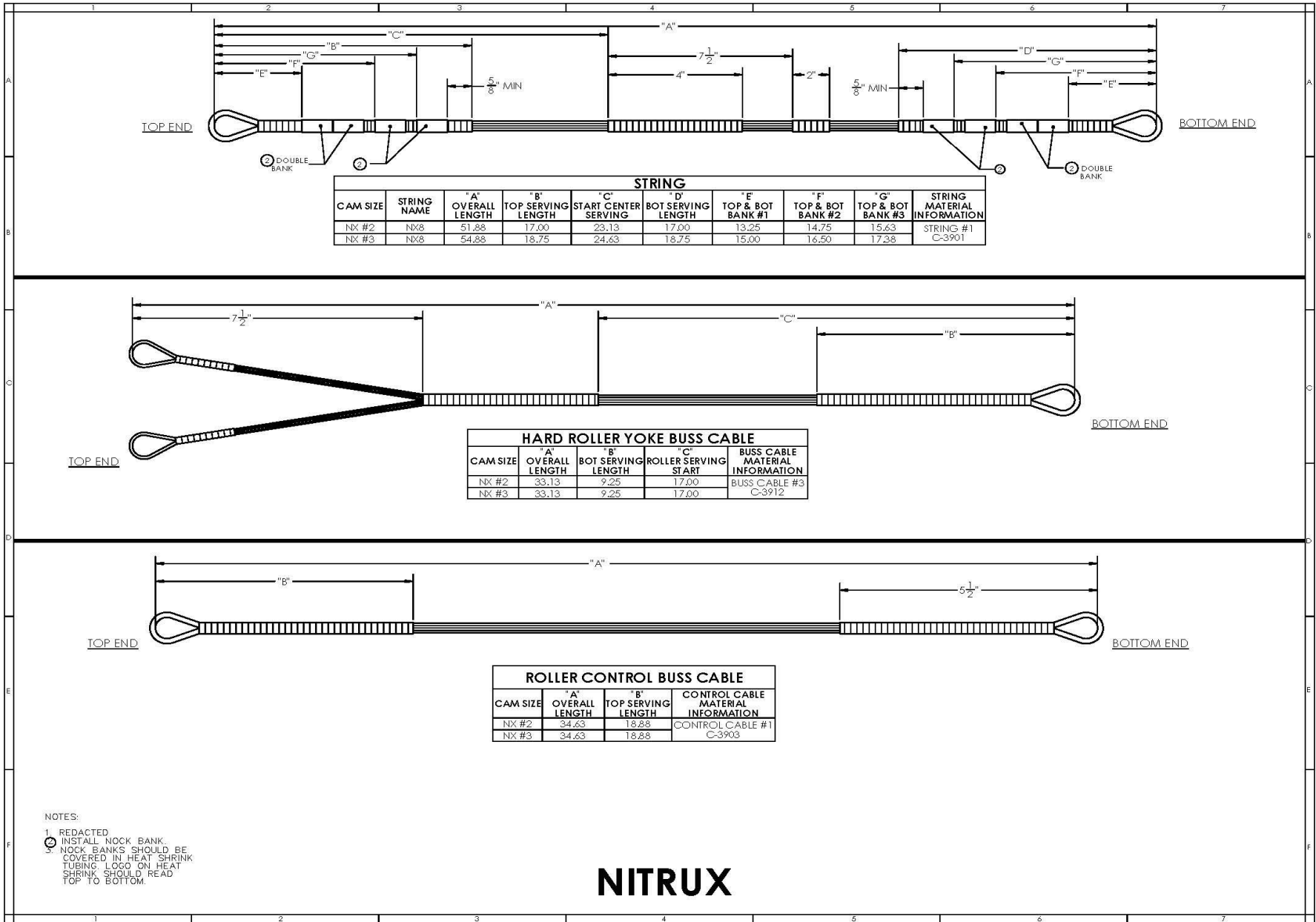
Rocker: #16 & #17

Date: 12/6/2018

After Market String Warning

Warning: Never use aftermarket strings or cables on your bow. Aftermarket strings and cables may not be suitable for replacement on your Hoyt bow. Hoyt cannot guarantee that the materials or the manufacturing methods used by aftermarket string and cable manufacturers will be suitable for use on your Hoyt bow. Failure to heed this warning could result in serious injury or death to yourself or bystanders. Only Genuine Hoyt or Fuse branded strings and cables should be used on your Hoyt bow.

Warning: Never move, remove, or add additional string weights to your Hoyt bow's string or cables. String weights are specifically engineered for weight and location to ensure correct operation of your bow. Alterations to string and cable speed weights could cause your bow to break or malfunction and cause serious injury or death.



NOTES:
 1. REDACTED
 2. INSTALL NOCK BANK.
 3. NOCK BANKS SHOULD BE COVERED IN HEAT SHRINK TUBING. LOGO ON HEAT SHRINK SHOULD READ TOP TO BOTTOM.

NITRUX