

Double XL - 12" Quad Flex - Hyper ZT Cam

| CAM | LETOFF | BRACE HEIGHT | AXLE TO AXLE | DRAW LENGTH | MODULE POSITION | BASE CAM | STRING | CONTROL CABLE | BUSS CABLE | CAM FAMILY |
|-------------|--------|--------------|--------------|-------------|-----------------|----------|--------|---------------|------------|------------|
| Hyper ZT #2 | 85%* | 7 | 35 3/4 | 26 1/2 | A | 2 | 57.50 | 38.75 | 37.13 | Hyper ZT |
| | 85%* | 7 | 35 3/4 | 27 | B | 2 | 57.50 | 38.75 | 37.13 | Hyper ZT |
| | 85%* | 7 | 35 3/4 | 27 1/2 | C | 2 | 57.50 | 38.75 | 37.13 | Hyper ZT |
| | 85%* | 7 | 35 3/4 | 28 | D | 2 | 57.50 | 38.75 | 37.13 | Hyper ZT |
| | 85%* | 7 | 35 3/4 | 28 1/2 | E | 2 | 57.50 | 38.75 | 37.13 | Hyper ZT |
| | 85%* | 7 | 35 3/4 | 29 | F | 2 | 57.50 | 38.75 | 37.13 | Hyper ZT |
| | 85%* | 7 | 35 3/4 | 29 1/2 | G | 2 | 57.50 | 38.75 | 37.13 | Hyper ZT |
| | 85%* | 7 | 35 3/4 | 30 | H | 2 | 57.50 | 38.75 | 37.13 | Hyper ZT |

Double XL - 12" Quad Flex - Hyper ZT Cam

| CAM | LETOFF | BRACE HEIGHT | AXLE TO AXLE | DRAW LENGTH | MODULE POSITION | BASE CAM | STRING | CONTROL CABLE | BUSS CABLE | CAM FAMILY |
|-------------|--------|--------------|--------------|-------------|-----------------|----------|--------|---------------|------------|------------|
| Hyper ZT #3 | 85%* | 7 | 35 3/4 | 29 | A | 3 | 60.25 | 38.75 | 37.13 | Hyper ZT |
| | 85%* | 7 | 35 3/4 | 29 1/2 | B | 3 | 60.25 | 38.75 | 37.13 | Hyper ZT |
| | 85%* | 7 | 35 3/4 | 30 | C | 3 | 60.25 | 38.75 | 37.13 | Hyper ZT |
| | 85%* | 7 | 35 3/4 | 30 1/2 | D | 3 | 60.25 | 38.75 | 37.13 | Hyper ZT |
| | 85%* | 7 | 35 3/4 | 31 | E | 3 | 60.25 | 38.75 | 37.13 | Hyper ZT |
| | 85%* | 7 | 35 3/4 | 31 1/2 | F | 3 | 60.25 | 38.75 | 37.13 | Hyper ZT |
| | 85%* | 7 | 35 3/4 | 32 | G | 3 | 60.25 | 38.75 | 37.13 | Hyper ZT |

Double XL - 12" Quad Flex - Hyper ZT Cam

| CAM | LETOFF | BRACE HEIGHT | AXLE TO AXLE | DRAW LENGTH | MODULE POSITION | BASE CAM | STRING | CONTROL CABLE | BUSS CABLE | CAM FAMILY |
|-------------|--------|--------------|--------------|-------------|-----------------|----------|--------|---------------|------------|------------|
| Hyper ZT #4 | 85%* | 7 | 35 3/4 | 31 | A | 4 | 62.00 | 38.75 | 37.13 | Hyper ZT |
| | 85%* | 7 | 35 3/4 | 31 1/2 | B | 4 | 62.00 | 38.75 | 37.13 | Hyper ZT |
| | 85%* | 7 | 35 3/4 | 32 | C | 4 | 62.00 | 38.75 | 37.13 | Hyper ZT |
| | 85%* | 7 | 35 3/4 | 32 1/2 | D | 4 | 62.00 | 38.75 | 37.13 | Hyper ZT |
| | 85%* | 7 | 35 3/4 | 33 | E | 4 | 62.00 | 38.75 | 37.13 | Hyper ZT |

* Also available in 80% & 75%

Model: Double XL Limb: 12" Quad Flex Stealth shot bar: 5.38 Roller Mount #14 Pocket: W12T & W12B
 Model Year: 2019 Limb shox: #3.1 Top Limb Bolt Length: 1.75 String model: Z8 Rocker: #16 & #17
 Date: 12/6/2018 #4.1 Bottom

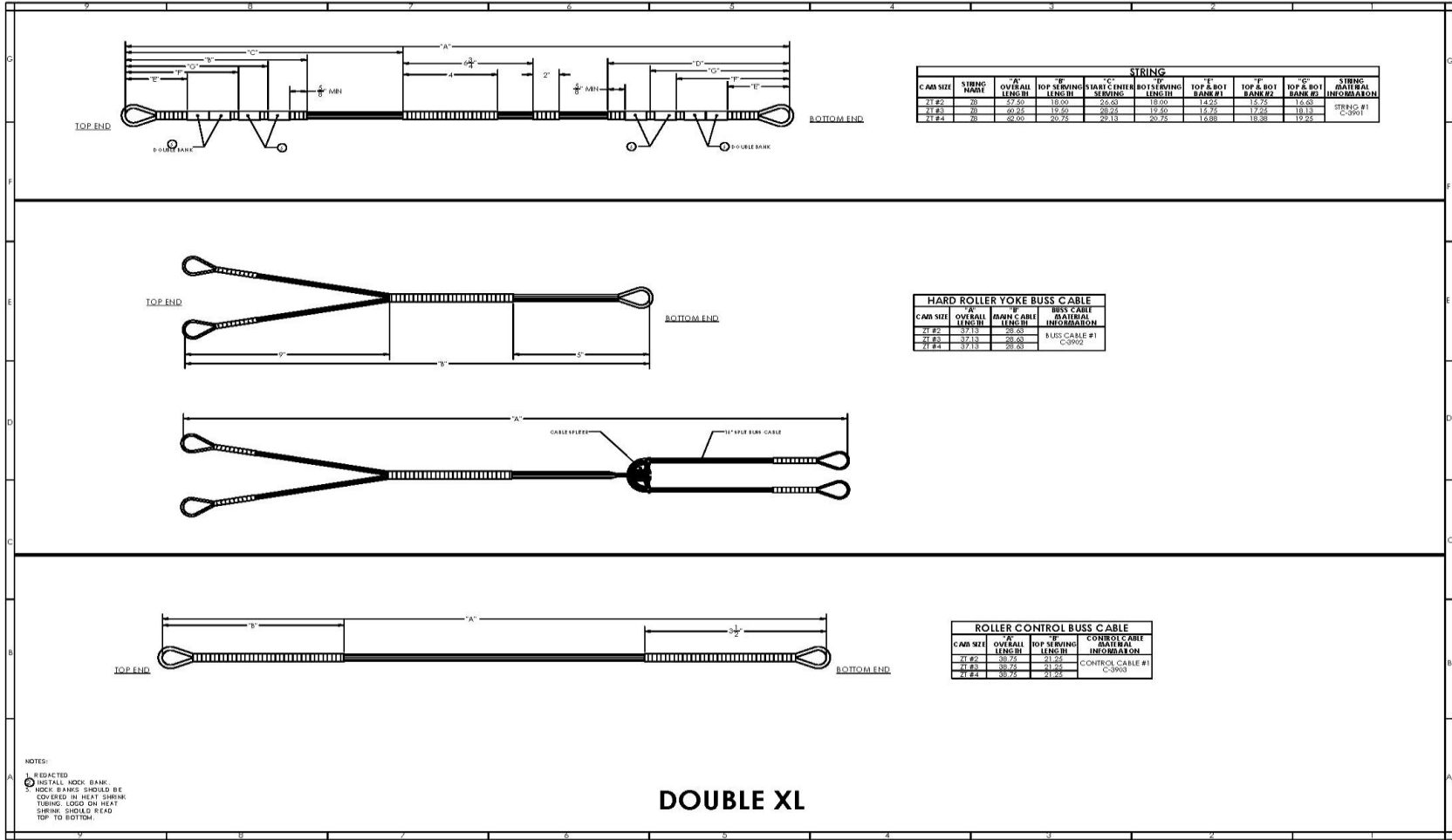
After Market String Warning

Warning: Never use aftermarket strings or cables on your bow. Aftermarket strings and cables may not be suitable for replacement on your Hoyt bow. Hoyt cannot guarantee that the materials or the manufacturing methods used by aftermarket string and cable manufacturers will be suitable for use on your Hoyt bow. Failure to heed this warning could result in serious injury or death to yourself or bystanders. Only Genuine Hoyt or Fuse branded strings and cables should be used on your Hoyt bow.

Warning: Never move, remove, or add additional string weights to your Hoyt bow's string or cables. String weights are specifically engineered for weight and location to ensure correct operation of your bow. Alterations to string and cable speed weights could cause your bow to break or malfunction and cause serious injury or death.

Buss Cable Main body construction directions

The Main body buss cable should be layed up as a 14 strand string
 Serve yoke anchor pulley loops under tension on both ends of layed up material
 Pull tension on the cable and input twists to desired twist rate
 Serve center of long span under tension to create bottom loop serving
 Relieve tension and fold cable in half so both anchor pulley loops are on one hook and the folded point of the string is on other hook
 Serve body of cable under tension to complete (DO NOT ADD TWISTS DURING THIS STEP)



NOTES:
 1. REFACTED
 2. INSTALL MOCK BANK.
 3. MOCK BANKS SHOULD BE COVERED IN HEAT SHRINK TUBING. LOOS ON HEAT SHRINK SHOULD READ TOP TO BOTTOM.

DOUBLE XL

