

Prevail 40 - XT2000 - SVX Cam & 1/2

CAM	LETOFF	BRACE HEIGHT	AXLE TO AXLE	DRAW LENGTH	MODULE POSITION	BASE CAM	STRING	CONTROL CABLE	BUSS CABLE
SVX	65%	7 5/8	39 3/4	25	A	1	58.13	45.38	41.88
	65%	7 5/8	39 3/4	25 1/2	B	1	58.13	45.38	41.88
	65%	7 5/8	39 3/4	26	*C	1	58.13	45.38	41.88
	65%	7 5/8	39 3/4	26 1/2	D	1	58.13	45.38	41.88
	65%	7 5/8	39 3/4	27	E	1	58.13	45.38	41.88
	65%	7 1/2	40 5/16	27 1/2	A	2	60.00	44.38	42.38
	65%	7 1/2	40 5/16	28	B	2	60.00	44.38	42.38
	65%	7 1/2	40 5/16	28 1/2	*C	2	60.00	44.38	42.38
	65%	7 9/16	40 1/4	29	A	3	61.75	44.38	42.00
	65%	7 9/16	40 1/4	29 1/2	B	3	61.75	44.38	42.00
	65%	7 9/16	40 1/4	30	*C	3	61.75	44.38	42.00
	65%	7 7/16	40 3/4	30 1/2	A	4	63.50	44.88	42.75
	65%	7 7/16	40 3/4	31	B	4	63.50	44.88	42.75
	65%	7 7/16	40 3/4	31 1/2	*C	4	63.50	44.88	42.75
	65%	7 1/2	40 13/16	32	A	5	65.00	45.00	42.63
	65%	7 1/2	40 13/16	32 1/2	*B	5	65.00	45.00	42.63

Prevail 40 - XT2000 - X3 Cam & 1/2

CAM	LETOFF	BRACE HEIGHT	AXLE TO AXLE	DRAW LENGTH	MODULE POSITION	BASE CAM	STRING	CONTROL CABLE	BUSS CABLE
X3	65/75 %	7 3/4	39 13/16	26	A	1	57.75	43.13	41.63
	65/75 %	7 3/4	39 13/16	26 1/2	B	1	57.75	43.13	41.63
	65/75 %	7 3/4	39 13/16	27	C	1	57.75	43.13	41.63
	65/75 %	7 3/4	39 13/16	27 1/2	D	1	57.75	43.13	41.63
	65/75 %	7 3/4	39 13/16	28	*E	1	57.75	43.13	41.63
	65/75 %	7 13/16	40 5/16	28	A	2	60.88	43.63	42.25
	65/75 %	7 13/16	40 5/16	28 1/2	B	2	60.88	43.63	42.25
	65/75 %	7 13/16	40 5/16	29	C	2	60.88	43.63	42.25
	65/75 %	7 13/16	40 5/16	29 1/2	D	2	60.88	43.63	42.25
	65/75 %	7 13/16	40 5/16	30	*E	2	60.88	43.63	42.25
	65/75 %	7 13/16	41 3/16	30	A	3	63.88	44.38	42.88
	65/75 %	7 13/16	41 3/16	30 1/2	B	3	63.88	44.38	42.88
	65/75 %	7 13/16	41 3/16	31	C	3	63.88	44.38	42.88
	65/75 %	7 13/16	41 3/16	31 1/2	D	3	63.88	44.38	42.88
	65/75 %	7 13/16	41 3/16	32	*E	3	63.88	44.38	42.88

Date: 10/13/16

String Model: SVX-PL

Limb Bolt Length: 1.75

X3-PL2

Date: 2/21/18

Model: Prevail 40

Limb: XT2000

Bow Mount #2

Pocket: W10

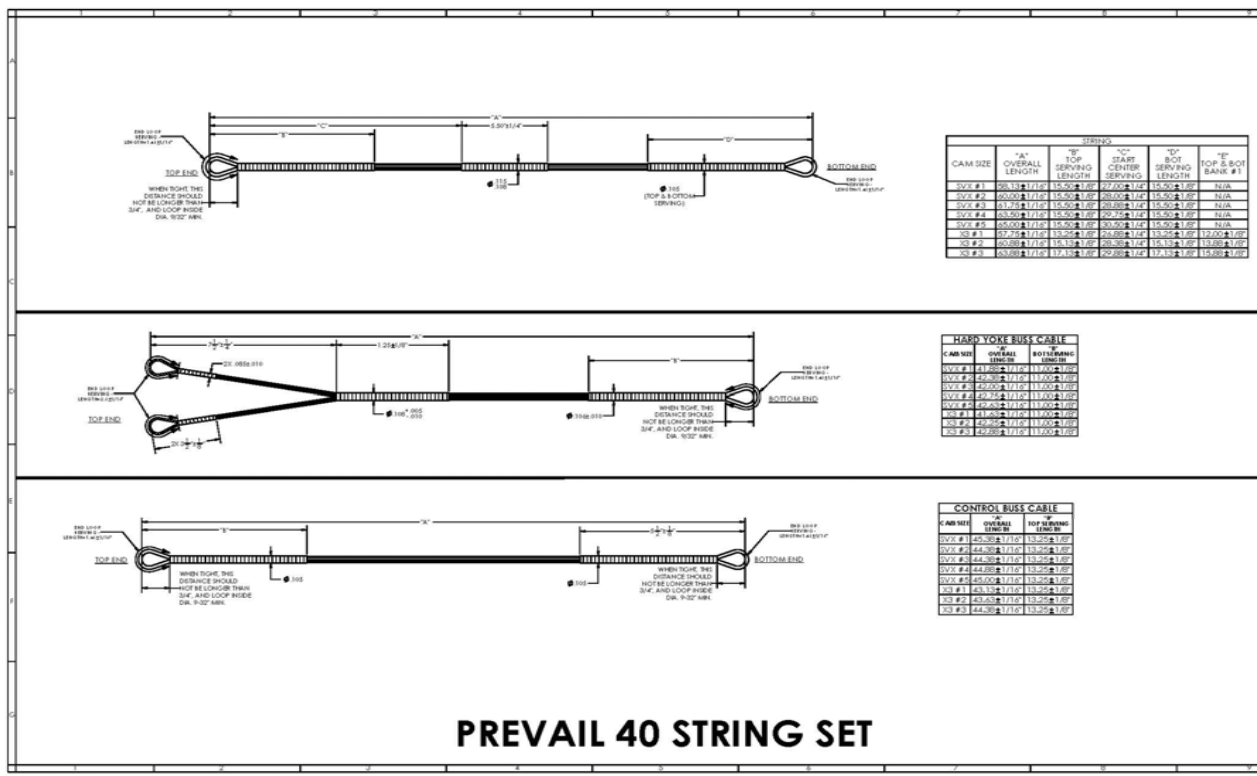
Model Year: 2018

Limb Shox #2

Bar Mount #1

Rocker: #6

* = Shipped module position



STRING					
CAM SIZE	"A" OVERALL LENGTH	"B" TOP SERVING LENGTH	"C" START CENTER SERVING	"D" BOT SERVING LENGTH	"E" TOP & BOT BANK #1
SVZ #1	65.50" ± 0.01	15.50" ± 0.01	22.00" ± 0.01	15.50" ± 0.01	N/A
SVZ #2	60.00" ± 0.01	15.50" ± 0.01	20.00" ± 0.01	15.50" ± 0.01	N/A
SVZ #3	65.50" ± 0.01	15.50" ± 0.01	20.00" ± 0.01	15.50" ± 0.01	N/A
SVZ #4	65.50" ± 0.01	15.50" ± 0.01	20.00" ± 0.01	15.50" ± 0.01	N/A
SVZ #5	60.00" ± 0.01	15.50" ± 0.01	20.00" ± 0.01	15.50" ± 0.01	N/A
SVZ #6	65.50" ± 0.01	15.50" ± 0.01	20.00" ± 0.01	15.50" ± 0.01	17.00" ± 0.01
SVZ #7	60.00" ± 0.01	15.50" ± 0.01	20.00" ± 0.01	15.50" ± 0.01	17.00" ± 0.01
SVZ #8	65.50" ± 0.01	15.50" ± 0.01	20.00" ± 0.01	15.50" ± 0.01	17.00" ± 0.01

HARD YOKE BUSS CABLE		
CAM SIZE	OVERALL LENGTH	TOP BROW LENGTH
SVZ #1	61.00" ± 0.01	11.00" ± 0.01
SVZ #2	56.50" ± 0.01	11.00" ± 0.01
SVZ #3	61.00" ± 0.01	11.00" ± 0.01
SVZ #4	61.00" ± 0.01	11.00" ± 0.01
SVZ #5	56.50" ± 0.01	11.00" ± 0.01
SVZ #6	61.00" ± 0.01	11.00" ± 0.01
SVZ #7	56.50" ± 0.01	11.00" ± 0.01
SVZ #8	61.00" ± 0.01	11.00" ± 0.01

CONTROL BUSS CABLE		
CAM SIZE	OVERALL LENGTH	TOP BROW LENGTH
SVZ #1	45.50" ± 0.01	13.50" ± 0.01
SVZ #2	44.00" ± 0.01	13.50" ± 0.01
SVZ #3	44.00" ± 0.01	13.50" ± 0.01
SVZ #4	44.00" ± 0.01	13.50" ± 0.01
SVZ #5	45.50" ± 0.01	13.50" ± 0.01
SVZ #6	44.00" ± 0.01	13.50" ± 0.01
SVZ #7	44.00" ± 0.01	13.50" ± 0.01
SVZ #8	44.00" ± 0.01	13.50" ± 0.01

PREVAIL 40 STRING SET